





2018/2019 Winter Season

# ELYSIAN GANGCHON SKI & BOARD TRAIL MAP

## Exciting skiing & boarding Elysian Gangchon SKI & Board



### 1 hour from Seoul - Close and Convenient Family Ski Resort

A Place where you can Enjoy Exciting Winter Leports running into snow-white nature The six-seater ultra-high-speed lift with no waiting time and the new ELAN Carving Ski. With the new NITRO deck, you can enjoy thrilling reports in a convenient and safe environment

#### Ski Resort Business Hours

Category	Hours	Remarks
Weekdays	09:00~17:00	
Grooming	17:00~18:30	
Night Hours	18:30~24:00	Night Hours (Open until 24:00 with Dragon Slope) Open until 02:00am (04:00am on weekends) from Dec. 14, 2018 to Feb. 23, 2019
	18:30~2:00/04:00	

※Every Sunday is open until 24:00 (Mondays to Thursdays from 18:30 to 2:00 the next day, Fridays / Saturdays from 18:30 to 4:00 the next day, Sundays 18:30 ~ 24:00)

#### A Romantic Night at Hot Ski Resorts

##### December 22nd Jazz Performance

• Date and time: Saturday, December 22nd, 19:00~20:00  
• Venue: Grand Ballroom, 2nd floor Condo  
• Appearance: Yeou University Applied Music Faculty  
• Other: "Dinner Buffet" on the day (reservation required in advance)

Winter Special Buffet  
• Opening Hours: 18:00 ~ 21:00  
• Reservations and Inquiries: +82-33-260-2760  
• Buffet price: ₩40,000 adults / ₩20,000 children (6~13 years old)

##### December 22nd Chuncheon MBC Special Concert (Sat)

• Date and time: Saturday, December 22, 2018, from 17:00 to 18:00  
• Venue: Outdoor stage

##### December 31, year-end performance

• Date and time: Monday, December 31st, 2018, from 12:30 to 00:10  
• Venue: Outdoor stage  
• Appearance: MC Broadcaster, (Kim, Han Seok)  
• Singer (Harmonize and more)  
• Other: MC Recreation / Singer Performance, Fireworks / Torch Skis, etc.

##### Family Experience Events

• Date and time: December 17, 2018 ~ During the Season  
• Venue: Ski School Reception Desk or 1st floor Condo  
• Details: Making Traditional Tteok(korean Ricecake) and Party Finger Foods  
※ For more information, please visit the homepage.

www.elysian.co.kr

## Another enjoyment of Elysian~ Food & Beverage



Experience the varied and sophisticated taste of world that five-star chefs have arranged. Family trips, with friends or lovers your stay will be special with Elysian.

Condo 1F	Odeum 17:00~24:00 (Unit 2 edock Weekends / Peak seasons) ARABISTA Sun-Thu 8:00~21:00 / Fri-Sat 8:00~22:00 Boutique El Bakery Sun-Thu 8:00~21:00 / Fri-Sat 8:00~22:00 Jungdamp, Weekdays 07:30~24:00 / Fri, Sat 07:30 ~ 02:00	₩ 2792 ₩ 2763 ₩ 2763 ₩ 2666
Condo 2F	Uyangjeon (Buffet breakfast) 07:00~22:00 El Kitchen (Group reservation restaurant) 07:00~22:00	₩ 2760 ₩ 2764
Ski House 2F	Beauchalet 09:00 ~ 02:00 (Weekdays, 02:00(Fri, Sat, Holiday and the day before)	₩ 2796
Ski House 1F	Lotteria 09:00~23:00	₩ 2796
Challenge House	Snow Garden 08:00~00:00	₩ 2773
Summit Services 1F	Alp House 1F 09:00~01:00(during weekdays) / 03:00(Fri, Sat, Holiday and the day before)	₩ 2766
Summit Services 2F	Cheong Chun Barjeon 10:00~16:00	₩ 2767

Inquires & Information +82-33-260-extension number  
※ Opening hours may change depending on the situation of the restaurant

## Safe and fun, even without a guardian Elysian Gangchon Kids Ski School



### Classes by Certified Instructor by Korea Ski Instructors Association or Ski Resort Association of Korea Union leaders for skiing, Ski Management Association

As Responsible Instructor System, Continuity of Lessons for Children is guaranteed from departure to arrival. It operates as Close Contact Full Care system by the Instructor. (Assign a Dedicated instructor to issue a certificate)

• Operating period : 2018.12.24(Mon) ~ 2019.2.14(Thu)  
※ Every Monday to Thursday (4 days)

• Age Range: Children aged 6 to 13 years  
• Program: 3:1 Lessons (3 hours in the morning) + Lift + Equipment Rental + Lunch + Shuttle bus (free Round-trip) + Insurance (applicable on the day of use)

Shuttle bus for kids(Accompanied by a guide) ※Bus routes may be adjusted in part

Route1: Sadang → New Banpo → Banpo → Apgyeongjeong  
→ Jamsil Seohae → Jamsil Nam → Ski resort  
Route2: Hapjung Station → Hongdae Univ. Station → DMC Station  
→ Eungnam Station → Yeonsilnae Station → Gupabal Station

#### Information for Reservations on Ski Lessons

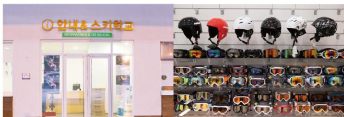
After accessing Select Date/Class Type Select APN/2 Payment Confirmation of Reservation Please Contact the Ski School for the confirmation Meet the teacher Start the class

#### Ski School Curriculum



Ski School Application Inquiries and Information +82-33-260-2870

## Meet a variety of amenities. Subsidiary Facilities



Enjoy skiing lightly and comfortably using the must-have amenities that we provide throughout the winter season

Customer Information Center : 06:30~23:00	₩ 2345,246
Condo Front Desk: 24-hour	₩ 2660
Reservations : 09:00~18:00	₩ 2330
Inquiries on Group Events : 09:00~18:00	₩ 482-2-2095-1507
A Ticket Booth : Ski House, Challenge House	₩ 2568-9
Medical Room : Ski House 1F	₩ 2881
Fitness Center : 06:00~21:00 (open late night: 06:00~22:00)	₩ 482-2-2095-1507
Golf practice ground : 07:00~22:30	₩ 2992
Screen golf : 07:00~22:30	₩ 2992
Sauna : 06:00~21:00 (open late night: 06:00~22:00)	₩ 2665
GS25 Convenience Store: 24-hour	₩ 482-33-260-2730
Sports Shop: 09:00~02:00	₩ 2795
Video Game Arcade : 09:00~22:00	₩ 2650

Inquires & Information +82-33-260-extension number  
※ Opening hours may change depending on the situation of the restaurant

When you visit the Elysian homepage and Facebook, you will receive various gifts.  
www.elysian.co.kr facebook.com/elysianresort

## The Only Ski Resort in Korea that the Railway passes through ITX Youth Train, Baegyang-ri Station



• Service period : '18.12.14(Fri) ~ '19.3.1(Wed) / 78Days  
• Number of trips : 8 on weekdays, 22 on Saturdays, 12 on Sundays/holidays  
※ Please visit KORAILTalk App or KORAIL website for more information

#### Baegyang-ri Station (Elysian Gangchon) 'Youth Train' Timetable

Train Reservations: www.letskorail.com

##### Weekdays

Train number	2005	2007	2011	2015	2033	2039
Time	08:56	09:57	12:03	13:03	18:04	21:09

##### The Inbound Train (Baegyang-ri Station → Yongsan, 2 times)

Train number	2032	2040
Time	15:25	18:59

##### Saturdays

The Outbound Train (Yongsan → Baegyang-ri Station, 15 times)															
Train number	2003	2007	2071	2017	2021	2025	2029	2033	2081	2083	2043	2045	2085	2063	2087
Time	08:00	09:26	10:26	11:00	12:00	13:01	14:02	15:02	16:03	17:31	18:35	19:30	20:30	21:31	22:41

##### The Inbound Train (Baegyang-ri Station → Yongsan, 7 times)

Train number	2018	2026	2084	2040	2048	2088	2056
Time	11:29	13:52	16:06	17:39	19:48	20:14	22:00

##### Sundays / Holidays

The Outbound Train (Yongsan → Baegyang-ri Station, 8 times)								
Train number	2001	2003	2007	2021	2017	2021	2025	2081

##### The Inbound Train (Baegyang-ri Station → Yongsan, 4 times)

Train number	2026	2040	2044	2068
Time	13:51	17:40	18:42	19:48

## The easiest way to get to Elysian Gangchon! Free Shuttle Bus

18/19 Shuttle Bus Stops and the Timetable of Metropolitan area for 18/19 Winter season

#### Early Morning Bus Service

Off-Peak Season : 2018. 12. 08~12. 21, 2019. 02. 18~03. 03  
• Departure from the Resort at 7:30  
• Gangnam line 6:30 Yeongjungsung Station → 6:50 Silim Station → 7:05 Sadang Station → 7:20 Gangnam Station → 7:35 Cheonho Station  
• Gangbuk line 6:55 Shincheon Station → 7:15 Seoul Station → 7:25 Dongdaemun History Park → 7:40 Cheongseong Station → 7:50 Gangsung Station → 8:05 Guri Station

Peak Season : 2018. 12. 22~2019. 02. 17 (Departure from the Resort at 17:30)  
• Hwaseong Station line 06:50 Hwaseong Station → 6:55 Hongdae Univ. Station → 7:10 Digital Media City Station → 7:12 Eungnam Station

• 7:25 Yeonsilnae Station → 7:30 Gupabal Station  
• Cheonggyangri line 07:10 Cheonggyangri Station → 7:25 Gangsung Station → 7:40 Guri

• Shinlim line 06:50 Silim Station → 06:57 Seoul Nat'l Univ → 07:05 Sadang Station → 07:20 Gangnam Station → 07:45 Jamsil Station → 07:55 Cheonho Station

• Uijeongbu line 6:50 Uijeongbu Station → 6:55 Hwaseong Station → 7:20 Nowon Station → 7:30 Sujo Station → 7:40 Gangsung Station → 7:55 Gangsung Station

• Balan Station line 6:50 Balan Station → 6:55 Hwaseong Station → 7:08 Mokdong Station → 7:15 Yeongjungsung Station → 7:25 Yeonseo Station

• Shincheon Station line 6:55 Shincheon Station → 7:10 Seoul Station → 7:25 Dongdaemun History Park → 7:40 Wangsimni Station → 7:55 Korea Univ. Station

• Anyang - Gwangmyeong line 6:40 Pyeongchon Station → 6:45 Bungeo Station → 7:30 Cheonan Station → 7:35 Gangsung Station

Weekdays : 2018. 12. 22~2019. 02. 17 (Departure from the Resort at 17:30)  
• Bucheon - Isan line 6:40 Bupyeong Station → 6:55 Gangsung Station → 7:20 Madu Station → 7:35 Isan Station

Weekends : 12:22 ~ 02:18 (Departure from at 17:30)  
• Isan line (Weekdays) → 6:40 Gangnam Station → 6:55 Taehyeon Station → 7:30 Sujo Station → 7:40 Gangsung Station → 7:55 Gangsung Station

• Bucheon - Gimpo line 6:25 Jamsil Station → 6:45 Bupyeong Station → 7:00 Gangsung Station → 7:05 Seungdong Station → 7:30 Gimpo Gochon Nonghyup

※ The metropolitan shuttle bus is free on board without reservation.  
Customers using the bus should check the operation period, operation time or boarding point of each stop before boarding. Depending on the weather or traffic conditions, there may be a delay in bus service time.

You are able to arrive faster and more comfortably by car through Seoul ↔ Chuncheon Expressway.

The Fast Way (Seoul ↔ Chuncheon Expressway)  
Ganghwa IC → Deokso IC → Heado IC → Seongju IC → Seokik IC → Ganghwa IC → General road (towards Ganghwa) → Suwon Highway Tunnel IC → General road (towards Ganghwa) → Turn right in front of Ganghwa GS25 → Elysian Gangchon

The Economic Way  
Outer Ring Road → Toegye IC → Motorway (towards Ganghwa, Gangneung) → Cheongpyeong → Gangneung → Elysian Gangchon (After turn from Kyunggang Bridge, Turn right toward Seodaecheon on the right)

Address 688 North Riverside Road, Namsan-myeon, Chuncheon-si, Gangwon-do

## Healthy and special taste of Elysian THE KITCHEN 9



### A modern Mediterranean restaurant 'The Kitchen 9' that is also in Myeongdong

Elysian FS Restaurant Business Division opened 'The Kitchen 9', a modern Mediterranean restaurant on the 2nd floor of Nine Tree Premier Myeongdong Hotel II in Myeongdong.

'The Kitchen 9' with the five-star chef's delicacies in the buffet style where you can enjoy an affordable. We are recognized as a healthy and delicious restaurant that saves the taste of fresh ingredients by word of mouth. Every dish has a special flavor and sincerely to make you want to eat more.



Healthy food that preserves the taste of fresh ingredients



It's more than just a daily meal, with loved ones

The Kitchen 9, 2F, Nine Tree Premier Hotel Myung-dong 2, 28, Namno, Jung-gu, Seoul  
Reservations and inquiries: ☎ +82-2-2179-2680(-1)

## Direction Information Shuttle Bus Schedule

Information on Free shuttle bus service  
+82-33-260-2345, 2346

#### Morning Bus Route

Peak Season : 2018. 12. 22~2019. 02. 17 (Departure from the Resort at 19:30)  
• Gangnam line 9:40 Yeongjungsung Station → 10:10 Sadang Station → 10:40 Jamsil Station  
• Gangbuk line 9:40 Shincheon Station → 10:10 Dongdaemun Historical Park → 10:35 Gangsung Station → 10:50 Guri Station NH Bank

Night Bus Route  
2018. 12. 22~2019. 02. 17 (Departure from the Resort - Weekdays 02:10 / Weekends 04:10)  
• Gangnam line 18:40 Yeongjungsung Station → 19:10 Sadang Station → 19:45 Jamsil Station  
• Gangbuk line 18:40 Shincheon Station → 19:10 Dongdaemun History Park → 19:35 Gangsung Station → 19:50 Guri Station

Chuncheon District shuttle bus  
2018. 12.8 ~ 2019. 02. 28 (Visit the Homepage for the bus schedules)  
• Weekday Operation of the Ski Resort (09:00 ~ 17:00): Running 1 ~ 9 times  
• Night Operation of the Ski Resort (09:00 ~ 24:00): Running 1 ~ 10 times  
• Late-Night Operation of the Ski Resort (09:00 ~ 02:04: 00 the next day): Running 1 ~ 11 times

The Resort → Chijeon-dong → Outback → Gongjaejeon → Nonghyejeonjeonjeon → Myeongdong → Dongbu Market → Bongu Middle School → ROSO The Shop → Jikjeongjae → Hanjin Apt → Daewoo Apt → Seongsongda → Toegye Complex 4 → Munung Park → Woorim Apt → Toegye Post Office → Park Yeon Hee Gallery → Ch'il Jeon Dong → The Resort

Circular Shuttle Bus inside the Resort  
2018. 12.8 ~ 2019. 02. 28 (Weekdays : Every 20 mins  
Weekends (Saturdays and Sundays) Every 10 mins between 10:00 and 19:00)

• Baegyang-ri Station - Challenge House (The First Bus 05:46, The Last Bus 01:01)  
• Baegyang-ri Station - The Front Gate of the Condo - Ski House - Challenge House - The Back Gate of the Condo

• Challenge House → Baegyang-ri Station (The First Bus 15:06, The Last Bus 23:46)  
• Challenge House → Ski House → Baegyang-ri Station

※ Details on Bus Stops www.elysian.co.kr  
※ Shuttle bus routes and timetables are subject to change.  
Please visit the homepage for more information.

## A different pleasure to enjoy in Elysian Gangchon Elysian Luge



### Let's feel the fun of the thrilling Luge in Gangchon

The Elysian Gangchon is going to open 'Luge' facility which is non-powered specially made cart in Spring 2019.  
Elysian Gangchon, an hour by train ride from Seoul, doubled the excitement utilizing ski slopes 100% with optimum conditions for Luge such as the grade of the ski slopes, the course curve and the course difficulty.  
The fact that you can enjoy the stunning scenery of the North River and the Mt. Gumbong is also a big attraction.

Non-powered wheel sleds you can enjoy even in the summer in Elysian Ski Slopes



Elysian Gangchon Luge  
To be opened  
in June 2019

It rides down freely on the longest course in the country, 1,802m.

Luge is a dynamic experiential reports that you can ride specially crafted cart without special power units, down the track using only the gravity and the grade of the landscape. It is a non-powered sled without wheels, but allows adjustment of direction and brake control that it can be enjoyed by children to adults. The track with gradual grade and the repeated curve course gives you the sensation of speed and thrill. It is a leisure sports that men and women of all ages can enjoy just with a protective hard hat.



세상 모든 것은, 누군가의 에너지다

I am your Energy  
GS칼텍스

## 1 hour from Seoul The Nearest Ski Resort you can come by Subway - Elysian Gangchon

With Unchangeable, Comfortable ITX Youth To Elysian Gangchon (Baegyang-ri Station)



Address 688 North Riverside Road, Namsan-myeon, Chuncheon-si, Gangwon-do  
Reservations & Inquiries Tel +82-33-260-2000

Elysian Resort Mania Member (App)  
Join Elysian Resort Mania member!  
You can enjoy the latest news and special benefits from Elysian Resort.

Download now from Google Play  
and enjoy many benefits!

10% extra discount coupon (lift / rentals) for the first time of joining Mania membership.

Contact Us ☎ +82-33-260-2000

