



Welcome to ELYSIAN



ELYSIAN Gangchon

688, Bukhangangbyeonbuk-ro, Namsan-myeon, Chuncheon-si, Gangwon-do, Korea
Tel. 033)260-2000 Group inquiries 02)2154-0657

ELYSIAN Jeju

1738-116, Pyeonghwa-ro, Aewol-eup, Jeju-si, Jeju-do, Korea | Tel. 064)798-7000 Group inquiries 02)2154-0669
www.elysian.co.kr



ELYSIAN
Gangchon
&
Jeju





Elysian resort is a luxury resort by GS E&C offering comfortable rest and diverse excitement. Elysian has two resorts, one in Gangchon and the other in Jeju. Elysian's guest rooms, designed for refined comfort, are in the middle of Mother Nature and restaurant & banquet offer the feast of all sorts. Elysian also has many leisure sport facilities such as a golf course, ski slope, and pool with several events all year long.

Elysian resort



Elysian Gangchon

1 hour from Seoul, the only resort reached via metro in Korea.
The quiet and comfortable environment surrounded by the northern Han River and Gangchon Geombong People's Forest.
Easy to visit travel attractions in Chuncheon thanks to Elysian's convenient location.

Elysian Gangchon (Condominium/Golf course) has acquired KS Service Certification! What is KS Service Certification?

It is a national certification by the government. To be certified, a company must prove itself to be capable to provide a quality service stably and consistently by passing the strict inspection of 190 categories.



Elysian Jeju

Korea's top 10 golf courses by YTN.
The prestigious resort with the view of Mt. Hallasan and blue ocean of Jeju island.
Suite villa in rural area, Golf tel, carefully selected menu, beautiful landscape.
We invite VIPs. The standard of country club in Korea – Elysian Jeju.

Korea's top 10 golf courses by YTN

In 2010 and 2012, Elysian Jeju was chosen as one of Korea's top 10 golf courses by YTN. Elysian Jeju has been good credited on the natural environment, stability, and eco-friendly environment. Elysian Jeju has maintained its status as the top golf course by earning the best credits on the service and contribution to the community.

Elysian Resort in Media



We Got Married, World Version (Aired in April 2014 / MBC TV)

Key of SHINee, a world-famous pop star, and Yagi Arasa, a Japanese top model got married in the program and filmed their honeymoon at Elysian Gangchon.

Location – Ski resort (Ski house, Alp house, Dragon slope) / Room 1401 & 1402
Starring – Jinwoon of 2am & Min of Miss A



The Star of Potato (Aired in January to February 2014 / tvn)

Episode 26 of the Star of Potato, a popular sitcom of tvn, was filmed at Elysian.

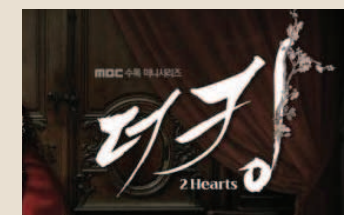
Location – Ski house plaza, Room 1201
Starring – Jinkoo Yeo, Julien Kang, Jungmin Kim, Songhyun Choi, Kyungpyo Ko, Soonjae Lee, Joohyun Rho, Bora Keum, etc.



Cheongdam-dong 111 (Aired in December 2013 / tvn)

A pop group CNBLUE goes on a trip to the ski resort. The episode is full of energy with romantic talk at a camping trailer and snowboard racing.

Location – Ski Resort (Ski house, Alp house, Dragon slope) /
Parking lot in front of Condominium.
Starring – CNBLUE (Younghwa Jung, Jonghyun Lee, Jungshin Lee)



The King 2 Hearts (Aired in 2012 / MBC TV)

Episode 13 was filmed at Elysian Gangchon. A world star Seoungki Lee and Jiwon Ha starred in the King 2 Hearts.

Location – Main entrance of Condominium, Waterside Park, Grand Ballroom, Room 1503
Starring – Seung gi Lee, Jiwon Ha, Jungseok Cho, Sungmin Lee, Mansik Jung, Hyunsang Kwon, etc.

Elysian's Patronage



Mastercard International Korea



IBM Korea



HP Korea



Microsoft Korea



Coca Cola Korea



Nike Korea



Motorola



Philip Morris Korea



Oracle



Toyota



Deloitte Anjin LLC



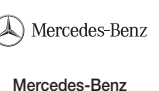
Fuji Xerox Korea



Sony Korea



Adidas Korea



Mercedes-Benz



BMW



Volkswagen



Nissan



LVMH Group



Hyundai

Elysian Gangchon



Rest and comfort in the middle of Mother Nature

Enjoy the true relaxation at Elysian Gangchon

Encounter a mystic rain-fog of the northern Han River, picturesque mountains,
vivid memories and emotions in your young days at Gangchon

Elysian Gangchon offers an unforgettable vacation
in diverse atmosphere of four seasons and full of energy.



1 hour from Seoul, Easy to reach via several traffic routes Encounter a beautiful resort surrounded by Mother Nature

You can reach Elysian Gangchon within only 1 hour from Seoul

The road from Seoul to Chuncheon has the great scenery to drive

You can reach Chuncheon with ease by getting on the Gyeongchun metro from Seoul

Elysian Gangchon is surrounded by the forest and river of Mother Nature.

Elysian Gangchon has independent structure without hazardous environment, which makes the perfect place for the rest and comfort for people who are tired with insipid daily life.



El Suite Condominium



Ski



Country Club



Elysian Gangchon

El Suite (Condominium, etc)

- 222 guest rooms, Banquet Room, Seminar Room, Business Center, Lecture Room
- Restaurant Woo Yang Jeong, Cafeteria, Tom N Toms, Fitness Center, Sauna, etc.

Ski Resort · 10 slopes, 6 Lifts

Convention Center (Ski House Bldg)

- 1st Floor Rental Shop, Ski School, Medical Room, Lotteria
- 2nd Floor Banquet Room, Seminar Room, Beauchalet
- 3rd Floor Medium/Small Seminar Room, Wedding Consultation Room

Golf · 27 Holes · Public 27 Holes · Driving range · Club House

Outdoor Leports

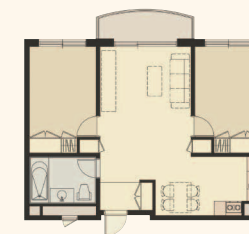
- People's Forest
 - A Course : Mt. Geombongsan round trip 4 km (2 hours)
 - B Course : Gugok Water Fall one-way trip 5.1 km (3 hours)
 - C Course : Munbae town round trip 9.1 km (4 hours)
- Natural grass square
 - Grass square in front of condominium : capacity of 3000 persons
- Grass field, pool, hiking trail, theme park, walking path

Enjoy your rest and comfort with full of elegance
Restful composure at the refined condominium
Clean and sanitary guest rooms by professional housekeepers

Beautiful scenery of the northern Hangang(River), wonderful atmosphere of golf course and waterside park beyond the window.

Relaxation of romantic atmosphere in the refined guest room that has been newly upgraded.

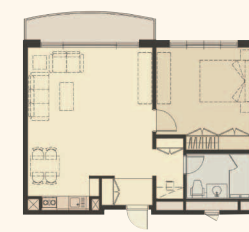
EI Suite Condominium provides you with the best comfort in Mother Nature.



Family (99.9m²) B Type
: 56 guest rooms (3~13F)

- 1 bedroom, living room, kitchen, bathroom

Korean or Western style is available according to the preference.
You can enjoy restful relaxation in spacious living room and bedroom.



Family (99.9m²) A Type
: 154 guest rooms (3~13F)

- 2 bedrooms, living room, kitchen, bathroom

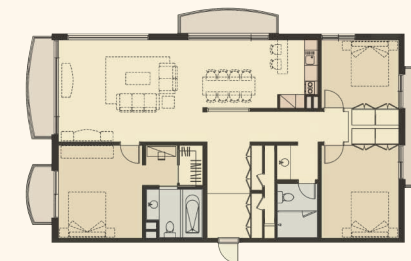
Capacity of 5 persons with 2 bedrooms. Korean or Western style is available according to the preference. Efficient spacing enhances convenience.



Deluxe (198m²) : 8 guest rooms (14~15F)

- 3 bedrooms, living room, kitchen, 2 bathroom, dress room, powder room, home bar

VIP guest room with elegant interior and beautiful view of green garden



Suite (224m²) : 4 guest rooms (14~15F)

- 3 bedrooms, living room, kitchen, 2 bathroom, dress room, powder room, home bar

Prepared for VIPs with presitge. Have yourself relaxed in a refined atmosphere

※ Room Amenities : TV, refrigerator, Internet access (wired & wireless), telephone, bath tub, bed (ondol, double or twin according to guest room type), dining table, sofa, hair dryer, towel, soap.



Elysian is the only resort reached via metro in Korea.
Enjoy the excitement of skiing itself without worries
about heavy traffic or bad weather.

Smart pass allows you to choose the time frame you want to go skiing.

Waiting time from ticketing to equipment rental is minimized with premium reservation system.

Strict snow maintenance and several events for pleasant ski culture

Elysian Gangchon has been making its best efforts to provide you with satisfaction.



A beautiful golf course of 27 dynamic holes
Breathtaking sceneries of
the northern Hangang(River), Mt. Samaksan and
Geombong are precious gifts for you by Elysian Gangchon

■ Elysian Gangchon Country Club

- Area : 1,041,925m²
- Course Distance : 8,833m
- Green : Pennlinks creeping bentgrass
- Fairway : Korean grass
- Tee Ground : Kentucky blue grass

■ Public Golf Course

9-hole golf course for the public at a reasonable fare.
Enjoy the beauty of golf with various degree of difficulty.



■ Slope

Slope	Linked slope	Total running distance (m)	Altitude		grade	Lift
			Highest	Lowest		
Beginner	Panther	306	116	95	9°	A1
	Rabbit	436	129	95	13°	A
	Dragon	1,500	260	95	23°	B
Intermediate	Horse / Zebra	1,032	260	95	35°	C
	Horse / Pegasus	1,045	260	88	31°over	C
	Deer	945	260	88	44°	D
	Puma	1,175	260	140	16°	D
Advanced	Leopard	518	212	88	52°	E
	Jaguar	524	-	93	54°	E



The best water park surrounded by Mother Nature
Pool with panoramic view of open sky and thick forest

The large spacious curvilinear pool is located in the middle of nature.
For your safety, slides are restricted to a certain age group.
Have fun at pool in the hot summer.

- Location : Outside of the 1st floor of condominium
- Water slide for grown-ups (50 m), preschoolers (4 m),
1 curvilinear pool for grown-ups, 1 kid pool, 1 semicircle pool for preschoolers
- Inquiry : 033-260-2664



Chefs from top hotels offer buffet menu, course menu, and fusion foods
Have quality foods having diverse appetite of the world and good health

You can enjoy exquisite taste at Elysian Gangchon.

Refined feast by the chief chef, diverse food selections of the countries around the world, and specialties of Chuncheon made of carefully selected ingredients – Pleasure of gourmet gets doubled-up.

[Restaurants]



Woo Yang Jeong (Condominium 2F)

Specialties in Chuncheon for 4 seasons, various food selections from the world, wine and liquor

- Popular menu : Stir-fried chicken ribs, Kimchi stew
- Tel : 033-260-2760



Cafeteria (Condominium 2F)

A casual restaurant full of free spirit and energy

- Tel : 033-260-2764



Beauchalet (Ski House 2F)

A modern restaurant recently renovated, world beer and cocktail

- Popular menu : Chicken, Pizza, Port cutlet
- Tel : 033-260-2769



Club House Restaurant (Club House 2F)

A classic restaurant for VIP, exquisite flavor and taste with carefully selected ingredients

- Popular menu : Special menu of the season
- Tel : 033-260-2153



Alphouse (Top of ski slope 2F)

A cozy and private place for small party.
Various menu available according to the type of gathering.

- Popular menu : BBQ party, Buffet
- Tel : 033-260-2767



The most precious moment in my life
Wedding at resort will make your wedding exquisite event



Wedding in Green

A romantic open air wedding on the field, everlasting pledge
Garden party in the middle of beautiful Mother Nature
Open air wedding like a garden party will be a dreamy wedding in a romantic atmosphere



Wedding in Crystal

A fantastic wedding under brilliant lighting
Wedding and banquet with beautiful lightings of Crystal Ballroom will make your moment much special



Wedding in Classic

A luxurious and classical wedding for the couple of dignity
Elegant European interior and refined service just like top hotel
Grand Ballroom is the perfect place for your wedding of dream

■ Wedding Hall

Type	Feature
Grand Ballroom	Comfortable atmosphere, high-tech lighting and audio system, Decoration by professional florist.
Crystal Ballroom	Refined beauty, splendid lighting and elegant table setting
Garden Wedding	Harmony of chamber music and beautiful view, various events
Poolside Wedding	Poolside party in a comfortable atmosphere, wedding event with unforgettable memories

With Elysian's quality service and performance
Your dream of banquet and party will come true

Fantastic banquet and party are ready for special gathering on your special day
From a large event for a big group to a small size gathering such as poolside BBQ party, garden party, birthday party, small music concert in the woods.
Customized service in a perfect place will be offered according to party size and meeting type.

■ Conference Room Information

[El Suite – Condominium]

Type	Name	Location	Capacity
Large	Grand Ballroom	2F	300 seat
	Pine	2F	80 seat
Medium	Maple	2F	80 seat
	Oak	2F	70 seat
	Poplar	B1	100 seat
	Lilac	B1	70 seat
	Lime	B1	70 seat
Small	Lavender	2F	35 seat
	Violet	2F	25 seat

[Convention Center – Ski House]

Type	Name	Location	Capacity
Large	Grand Ballroom	2F	200 seat
	Aqua	2F	120 seat
Medium	Coral	3F	120 seat
	Green	3F	30 seat
Small	Violet	3F	30 seat



Rest well and recover your energy
with several convenience facilities and
entertainment space only available at Elysian

Elysian Gangchon offers a variety of activities for 24 hours.

Rest well at Sauna and Sports Clinic, have fun by playing games at entertainment space,
get rid of your stress at singing rooms and karaoke all season long.

Enjoy restful relaxation at theme gardens such as green square, fire square,
deep blue ferry and waterside park.

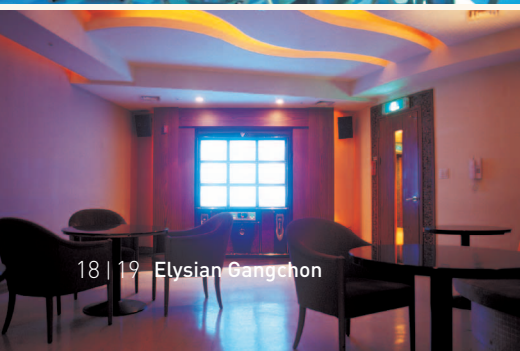
- Bear Garden - Listen to live music with draft beer (open during summer)
- Singing room - Latest song available with the best audio equipment
- Karaoke 'Odeum' - A luxury entertainment space with 5 separate rooms
- Sauna - Re-energizing your body and mind with a wonderful view
- Convenience Store GS 25 - A variety of items available for 24 hours
- Game room Game N Joy - Many games and equipment available for all ages
- Tom N Toms - Enjoy a cup of coffee and dessert with the fine view of grass plaza
- Massage sports clinic - Sports massage, skin care, foot massage
- Screen golf - Just like playing golf in the real field
- Multi-shop - A gift shop selling several leisure equipment and souvenirs
- Fitness center - Maintain your good health with light exercise in a nice fitness space
- Natural grass field - Play ball on the natural grass
- Camp fire - The highlight of your stay at Elysian
- Golf Range - Enjoy state-of-the-art driving range (distance 183m, 32 tee boxes)

Experience challenge, achievement and harmony
at 3 trail course of Gangchon Geombong People's Forest

Gangchon Geombong People's Forest established by Elysian Gangchon, Korea Forest Service,
and Chuncheon Forest of life. There are 3 trail courses and 5 woods according to hiking hours and
physical strength.

- Trail. 1 Valley Course : 80 min (trail distance 1,923m / lineal distance 1,095m)
 - Woods of Harmony : able to observe the nature around the valley
 - Woods of Hope : wild flower square, waterways with natural stones
 - Woods of Future : thick woods with several attractions
(wild flower square, tree garden, overpass, ecological education park)
- Trail. 2 Mountain Course : 70 min (trail distance 1,832m / lineal distance 962m)
 - Woods of challenge and achievement : Excitement of challenge and achievement
(deck steps, rope fence for mountain climbers)
- Trail. 3 Forest Course : 75 min (trail distance 2,558m / lineal distance 2,164m)
 - Woods of achievement and homecoming : the longest trail by the nature
(Good for activities at wild flower square and deck steps)

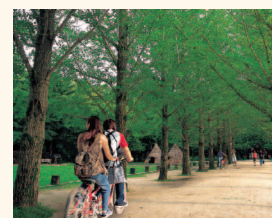
※ The time is calculated based on adult men



Information of travel attractions near Elysian Gangchon

Feel the true relaxation and make good memories in beautiful Gangchon

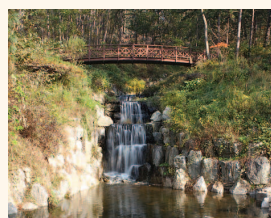
There are a lot of travel attractions near Elysian resort such as Namisum famous for Winter Story, museums, theme garden, and popular places for leisure sports.



Namisum



Gangchon Rail Park



Jade Garden



Petit France



Gugok Waterfall



Gosukjeong



Mulle-gil



Doll Museum



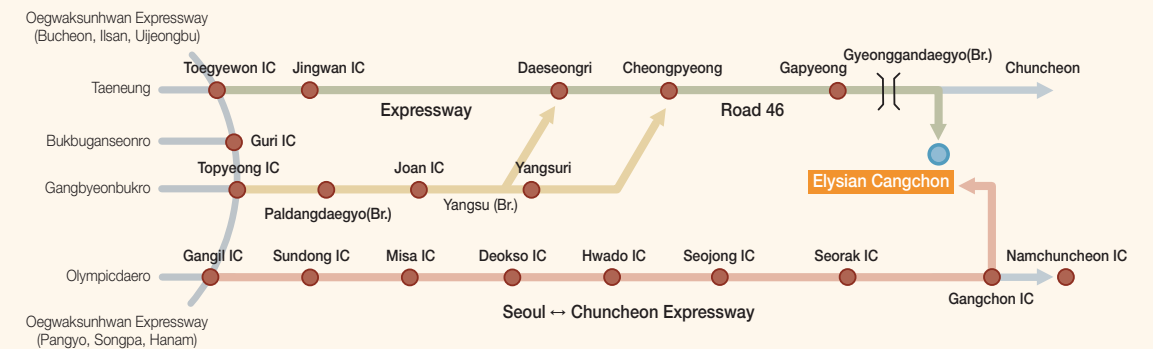
Animation Museum



Girl statue of the Soyang River

Elysian Gangchon

• Directions

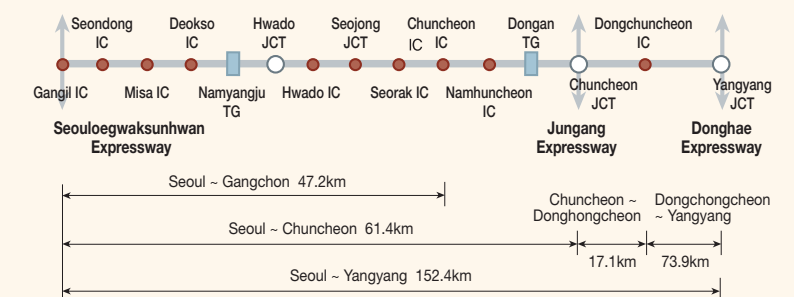


1. Fastest route (Seoul ↔ Chuncheon Expressway) : Gangil IC → Deokso IC → Hwado IC → Sejong IC → Sulak IC → Gangchon IC → Ordinary road (Gangchon direction) → Right turn at Gangchon GS25 → Elysian Gangchon
 2. Cost effective route : Outer ring road → Toegyeon IC → Expressway (to Chuncheon, Gapyeong) → Cheongpyeong → Gapyeong → Elysian Gangchon (Go straight 3km from Gyeonggangdaeyo(Br.) and turn right to Seocheon-ri)
 3. Route of romance : Paldang bridge → Joan IC → Yangsu bridge Samgeori → Saeteosamgeori → Daeseongri → Cheongpyeong → Gapyeong → Elysian Gangchon (Go straight 3km from Gyeonggangdaeyo(Br.) and turn right to Seocheon-ri)
- ※ Turn right at the crossing with three corners of Yangsu (Br.) → go to Sinchungpyung (Br.) → via Yangsuri reach through Chungpyung
- ※ From Incheon airport or Gimpo airport, you can reach Elysian Gangchon via metro.
- ※ From Yangyang airport, take an intercity bus to Elysian Gangchon (takes 3 hours)

Elysian Gangchon gets closer to you

• Seoul ↔ Chuncheon Expressway

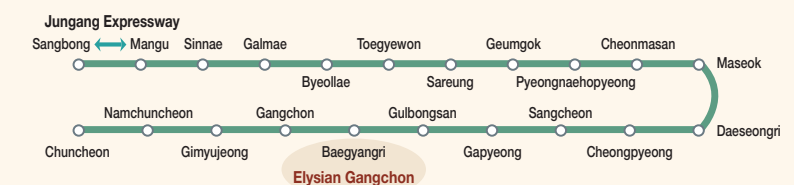
Expressway



※ Gangil IC ~ Gangchon IC 47.2km : less than 30 min.

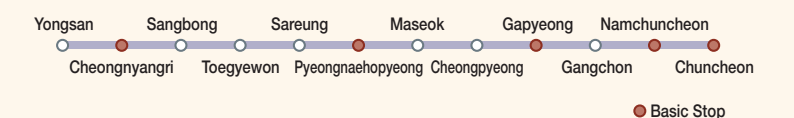
• Gyeongchun Line (59 min from Seoul)

Gyeongchun Line



- ※ 117 times per day (weekdays), 89 times (weekends)
- ※ Backyangri Station (Elysian Gangchon) → Condominium entrance : shuttle bus available every 20 minutes for free

ITX Cheongchun



- ※ Times per day (weekdays), 54 times (weekends)
- ※ Transfer to Gyeongchun Line at Gapyeong Station. Get off at Baegyangri Station



The stylish golf resort in the paradise by nature, Elysian Jeju

Enjoy more than a round of golf.

In addition to playing golf, Elysian Jeju offers more.

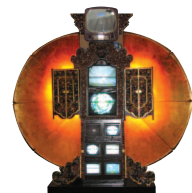
Guest rooms, restaurants and banquet are not different from those of top hotels.

The swimming pool located in the middle of nature and theme gardens are ready for you.

Elysian Jeju is the total golf resort with diverse convenience facilities.



Club House



- Location - 1738-116, Pyeonghwa-ro, Aewol-eup, Jeju-si, Jeju-do, Korea
- Area - 1,580,000m²
 - Golf course (36 holes) : 1,533,400m²
 - Guest rooms (58 golfels) : 46,600m²
 - Banquet room (golfer's plaza)



Elysian Jeju country club is located on the green field with Mt. Hallasan and Jeju sea for a background.

Along with the beautiful scenery, design of golf course, architecture, landscaping, interior and sculptures have been done by the world's top architects and artists.

- The sewage arrangements allows golf rounding in all-weather
- Grass management equal to PGA's
- 5 tea boxes according to distance, several options according to distance
- Delight of different approach strategies to each course



Campo Course



Lake Course



Pine Course



Garden view and fairway view available at El Suite Jeju GolfTel
A luxurious suite villa offers the best relaxation
with brilliant interior design



◀ Deluxe Suite (132.23m²) 50 rooms

A customized guest rooms.
Enjoy rest and comfort with the beautiful Bensley Garden and green yard beyond window

Composition – 2 bedrooms, 2 bathrooms, 1 living room, 1 kitchen, 2 powder rooms

Feature – customized design considering guest's line of move and convenience
– Private bathroom, toilet, and powder room for each bedroom
– Convenient 2-door closet
– A connecting door equipped for your privacy, rooms to be completely separated.



◀ Executive Suite (188.43m²) 8 rooms

The best interior reminding the gallery designed by Berthet-Pochy
El Suite offers restful composure in the refined space

Diverse menu of exquisite taste with carefully selected ingredients
Have a poolside BBQ party just like in your dream

■ Club house restaurant

- Location : Club house 1F (open hours 7:00 ~ 21:00)
- Capacity : indoor 108 persons / terrace 24 persons
- Popular menu : abalone stew in hot pot, boiled a hairtail, boiled a mackerel, roast tilefish etc.
- ※ Seasonal menu is available.

■ Bar Amuse

- Location: Golfer's plaza 2F (Open hours 19:00 ~ 1:00)
- A fantastic live performance with harmony of piano and saxophone
- World's choice liquor (whisky, gin, rum, vodka, wine), side dishes, cocktails

■ Bensley Garden

- Offers dinner party and BBQ party (open during summer) (Open hours 18:00 ~ 22:00)
- The garden is the masterpiece by the world-famous architect Bill Bensley



Convenience Facilities

Elysian Jeju gives the best support to your business with business center, fitness center, Karaoke and so on.

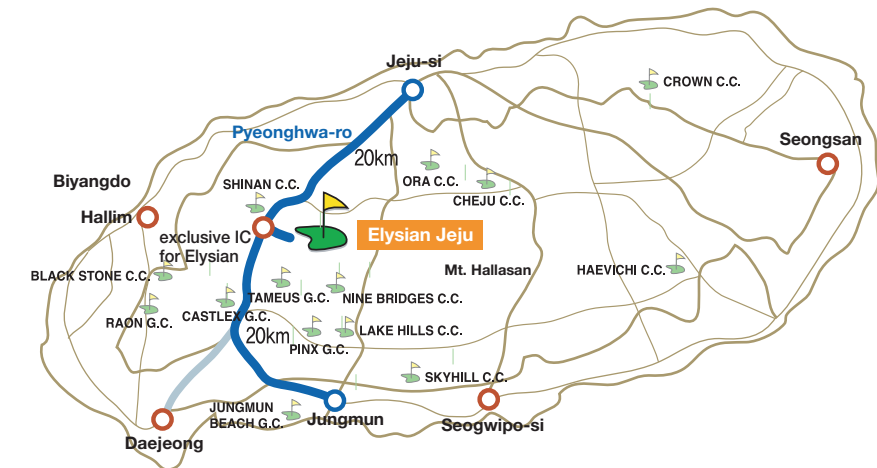
■ Golfer's Plaza

- Banquet room : a multi-purpose conference room for international conference, seminar, and workshop program
- Business center : efficient support provided for your business in convenient space
- Karaoke : a room karaoke with European interior
- Massage : sport massage after golf rounding, skin care, foot massage
- Fitness center : promotes good condition and physical strength
- Convenience store GS 25 : a variety of items available for 24 hours
- Pool : a place for true relaxation with a beautiful design and open view
- Sauna : new equipment and locker, Elysian's unique outdoor hot spring bath and sauna



Elysian Jeju

• Directions



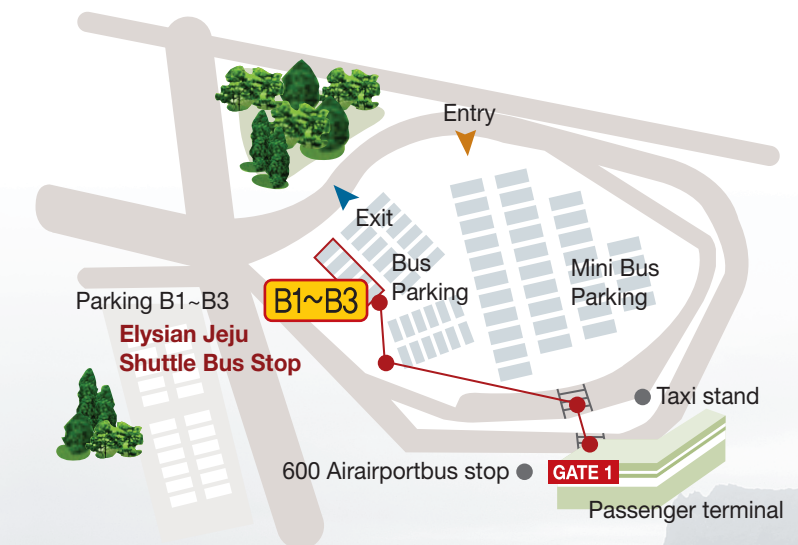
From Jeju Airport

Jeju Airport – Pyeonghwa-ro – Race track – to Eoeum, Bongseong (milepost) – exclusive IC for Elysian – Elysian Jeju

From Jungmungwangwang area

Jungmungwangwang area – Pyeonghwa-ro – exclusive IC for Elysian – Elysian Jeju (20km from Jungmungwangwang area)

• Shuttle Bus Stop



Elysian Jeju Shuttle Bus Stop

After coming out from number 1 gate of Jeju Airport, walk to 11 o'clock direction. Cross the street 2 times at crosswalks. Get on the bus at B1~B3 parking lot.

※ Reservation in advance is necessary for shuttle bus from Jeju Airport.
Please inform us the time you want to use shuttle bus when you make a reservation for golf rounding or golftel.
[Inquiry 064-798-7000]